



ULTIMATE POWER SOLUTION (FZC)

The world's best dealer on Diesel Power Generation, Control Systems & Power Solution

POWERED BY



CERTIFIED BY



1500 KVA 3 PHASE

50 Hz

GENERATING SET MODEL (UPS 1500 P)

| Output Ratings | Prime | Standby |
|----------------------------------|---------------------|---------------------|
| 380-415 V, 3 ph, 50 Hz, 1500 rpm | 1505 KVA 1204 KW | 1656 KVA 1325 KW |
| 380-415 V, 3 ph, 60 Hz, 1800 rpm | 1510 KVA 1208 KW | 1669 KVA 1329 KW |

ENGINE / TECHNICAL DATA

Ratings at 0.8 Power Factor

| | | |
|--|---|----------------|
| Engine Make | Perkins | |
| Engine Model | 4012 - 46TAG2A | |
| Governing Type | Electronic | |
| Number of Cylinders | 12 | |
| Cylinder Arrangement | 60° Vee form | |
| Bore and Stroke mm | 160 x 190 | |
| Displacement / Cubic Capacity litres | 45.8 | |
| Induction System | Turbocharged and air to water charge cooled | |
| Cycle | 4 stroke | |
| Combustion System | Direct Injection | |
| Compression Ratio | 13.6:1 | |
| Rotation | Anti-clockwise, viewed from flywheel end | |
| Cooling System | Water - cooled | |
| Frequency and Engine Speed | 50Hz & 1500rpm | 60Hz & 1800rpm |
| Gross Engine Power kW (hp) | 1113 (1492) | 1224 (1641) |
| Fuel Consumption @ 50% load L/hr | 157 | |
| @ 75% load L/hr | 234 | |
| @ 100% load L/hr | 310 | |
| Total Lubrication System Capacity litres | 177 | 177 |
| Total Coolant Capacity litres | 207 | 207 |
| Exhaust Temperature: °C | 455 | 455 |
| Fuel Tank Capacity: litres | N/A | N/A |

1500 KVA 3 PHASE

60 Hz

ALTERNATOR DATA

| | |
|-----------------------------|-----------------------|
| Make | UPS / Leroy Somer |
| Model | LSA50.2 L8 |
| No. of bearings | 1 |
| Insulation class | H |
| Wires | 6/12 |
| Ingress Protection | IP23 |
| Winding Pitch | 2/3 |
| Overspeed | 2250 mn ⁻¹ |
| Voltage Regulation (steady) | ± 0.5% |

CONTROL PANEL

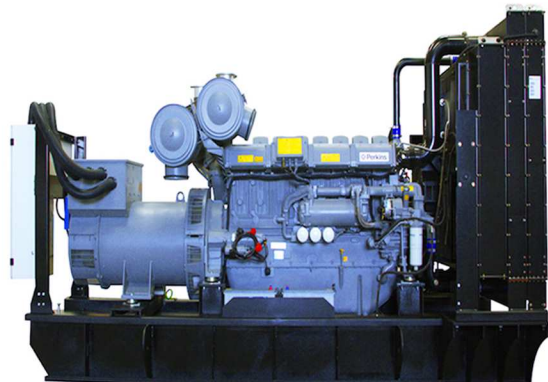
| | |
|-------|-------------|
| Make | Deep Sea |
| Model | 7000 SERIES |

The DSE 7000 Series is an Auto Start Control Module for single genset applications. It includes a backlit LCD display which clearly shows the status of the engine all the times. This module can either be programmed using the front panel or by using the DSE configuration suite PC software.

Metering and Alarm indications:

- Generator frequency
- Underspeed, Overspeed
- Generator volts (L-L, L-N)
- Generator current
- Engine oil pressure
- Engine coolant temperature
- Fuel level (Warning or shutdown) - Optional
- Hours run counter
- Battery volts
- Fail to start/stop
- Emergency stop
- Failed to reach loading voltage/frequency
- Charge fail
- Loss of magnetic pick-up signal - Optional
- Low DC voltage
- CAN diagnostics and CAN fail/error

Image for illustrative purposes only



1500 KVA
3 PHASE

50 Hz

STANDARD SPECIFICATIONS

1500 KVA
3 PHASE

60 Hz

1. ENGINE

Perkins four stroke heavy duty high performance industrial type diesel engine.

2. ENGINE FILTRATION SYSTEM

- Cartridge type dry air filter.
 - Two Cartridge type fuel filters.
 - Full flow lube oil filter.
- All filters have replaceable elements.

3. COOLING RADIATOR

Radiator and cooling fan, complete with safety guards, designed to cool the engine at high ambient temperatures (consult your dealer for de-ration factors)

4. EXHAUST SYSTEM

| | |
|---------------------------------|------------|
| Exhaust Gas flow | 309 m3/min |
| Maximum allowable back pressure | 5.0 (kPa) |

5. CIRCUIT BREAKER TYPE

3 pole ACB

6. ALTERNATOR

6.1 INSULATION SYSTEM

- The insulation system is Class H.
- All windings are impregnated in either a triple dip thermosetting liquid, oil and acid resisting polyester varnish or vacuum pressure impregnated with a special polyester resin.
- Heavy coat of antitracking varnish additional protection against moisture or condensation.

6.2 AUTOMATIC VOLTAGE REGULATOR (AVR)

The fully sealed Automatic Voltage Regulator maintains the Voltage Regulation at $\pm 1\%$. Nominal adjustment by means of a trim pot incorporated on the AVR.

7. MOUNTING ARRANGEMENT

7.1 COUPLING

The Engine and Alternator are directly coupled by means of an SAE flange. The Engine flywheel is flexibly coupled to the Alternator rotor.

7.2 ANTI-VIBRATION MOUNTING PADS

Anti-Vibration pads are affixed between the Engine / Alternator feet and the Baseframe thus ensuring complete vibration isolation of the rotating assembly.

7.3 SAFETY GUARDS

The Fan & Fan Drive along with the Battery Charging Alternator are Safety Guard protected for personnel protection.

8. FACTORY TEST

- The Generating set is load tested before dispatch
- All protective devices control functions and site load conditions are simulated. The generator and it's systems are checked before dispatch.

9. EQUIPMENT FINISHING

All mild steel components are fully degreased and painted with powder coated paint to ensure maximum scuff resistance and durability.

10. DOCUMENTATION

Operation & Maintenance manual, Circuit wiring diagrams and Commissioning / Fault Finding instruction leaflets are accompanied with the Generator.

11. QUALITY STANDARDS

The equipment meets the following standards: BS4999, BS5000, BS5514 IEC 60034, VDE0530, NEMA MG 1.22 and ISO 8528.

12. WARRANTY

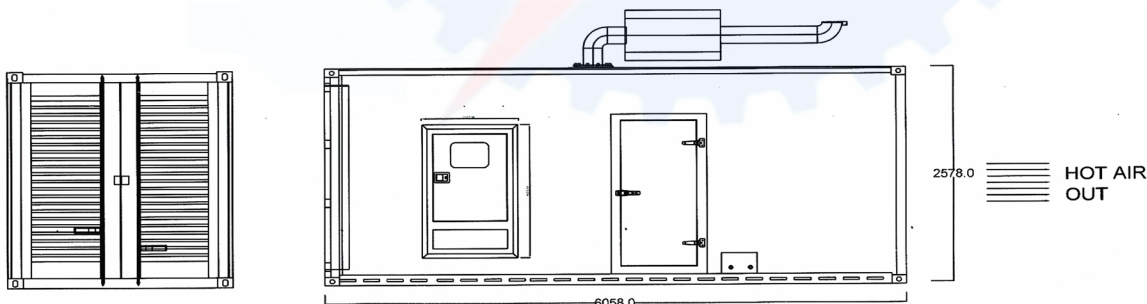
All of the Generating Sets are covered under a warranty policy for a period of 12 months or 1000 working hours, Warranty of the equipment is in line with manufacturers warranty terms & conditions.

(check warranty statement for more details, as it may vary for different countries)

In line with continuous product development, we reserve the right to change specifications without notice.

STANDARD GENERATOR DIMENSION AND WEIGHT

Containerized Type with Silent Soundproof Canopy



Open Type (without Soundproof Canopy)

