



# ULTIMATE POWER SOLUTION (FZC)

The world's best dealer on Diesel Power Generation, Control Systems & Power Solution

POWERED BY



CERTIFIED BY



**800 KVA**  
3 PHASE

**50 Hz**

## GENERATING SET MODEL ( UPS P 800)

### Output Ratings

380-415 V, 3 ph, 50 Hz, 1500 rpm

### Prime

800 KVA

640 KW

844 KVA

675 KW

### Standby

900 KVA

720 KW

938 KVA

750 KW

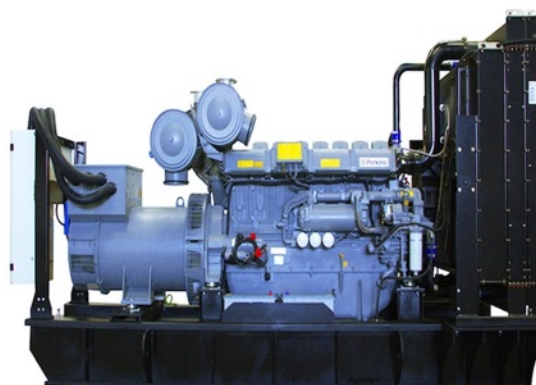
380-415 V, 3 ph, 60 Hz, 1800 rpm

## ENGINE / TECHNICAL DATA

Ratings at 0.8 Power Factor

Engine Make	Perkins	
Engine Model	4006 - 23TAG3A	
Governing Type	Electronic	
Number of Cylinders	6	
Cylinder Arrangement	Vertical in line	
Bore and Stroke mm	160 x 190	
Displacement / Cubic Capacity litres	22.9	
Induction System	Turbocharged and air to air charge cooled	
Cycle	4 stroke	
Combustion System	Direct Injection	
Compression Ratio	13.6:1	
Rotation	Anti-clockwise, viewed on flywheel	
Cooling System	Water - cooled	
Frequency and Engine Speed	50Hz & 1500rpm	60Hz & 1800rpm
Gross Engine Power kW (hp)	705 (945)	786 (1054)
Fuel Consumption @ 50% load L/hr	213	205
@ 75% load L/hr	210	214
@ 100% load L/hr	210	226
Total Lubrication System Capacity litres	113.4	113.4
Total Coolant Capacity litres	105	105
Exhaust Temperature: °C	500	500
Fuel Tank Capacity: litres	N/A	N/A

Image for illustrative purposes only



**844 KVA**  
3 PHASE

**60 Hz**

## ALTERNATOR DATA

Make	Ups / Leroy Somer
Model	UPS404G / TAL 049 C
No. of bearings	1
Insulation class	H
Wires	6/12
Ingress Protection	IP23

Winding Pitch 2/3 (n° 6)

Overspeed 2250 mn<sup>-1</sup>

Voltage Regulation (steady) ± 0.5%

## CONTROL PANEL

Make	Deep Sea
Model	7000 SERIES

The DSE 7000 Series is an Auto Start Control Module for single genset applications. It includes a backlit LCD display which clearly shows the status of the engine all the times. This module can either be programmed using the front panel or by using the DSE configuration suite PC software.

### Metering and Alarm indications:

- Generator frequency
- Underspeed, Overspeed
- Generator volts (L-L, L-N)
- Generator current
- Engine oil pressure
- Engine coolant temperature
- Fuel level (Warning or shutdown) - Optional
- Hours run counter
- Battery volts
- Fail to start/stop
- Emergency stop
- Failed to reach loading voltage/frequency
- Charge fail
- Loss of magnetic pick-up signal - Optional
- Low DC voltage
- CAN diagnostics and CAN fail/error

**800 KVA**

3 PHASE

**50 Hz****STANDARD SPECIFICATIONS****844 KVA**

3 PHASE

**60 Hz****1. ENGINE**

Perkins four stroke heavy duty high performance industrial type diesel engine.

**2. ENGINE FILTRATION SYSTEM**

- Cartridge type dry air filter.
- Two Cartridge type fuel filters.
- Full flow lube oil filter.

All filters have replaceable elements.

**3. COOLING RADIATOR**

Radiator and cooling fan, complete with safety guards, designed to cool the engine at high ambient temperatures (consult your dealer for de-ration factors)

**4. EXHAUST SYSTEM**

Exhaust Gas flow 180 m3/min

Maximum allowable back pressure 3.0 (kPa)

**5. CIRCUIT BREAKER TYPE**

3 pole MCCB. (4 pole is optional)

**6. ALTERNATOR****6.1 INSULATION SYSTEM**

- The insulation system is Class H.
- All windings are impregnated in either a triple dip thermosetting liquid, oil and acid resisting polyester varnish or vacuum pressure impregnated with a special polyester resin.
- Heavy coat of antitracking varnish additional protection against moisture or condensation.

**6.2 AUTOMATIC VOLTAGE REGULATOR (AVR)**

The fully sealed Automatic Voltage Regulator maintains the Voltage Regulation at  $\pm 1\%$ . Nominal adjustment by means of a trim pot incorporated on the AVR.

**7. MOUNTING ARRANGEMENT****7.1 COUPLING**

The Engine and Alternator are directly coupled by means of an SAE flange. The Engine flywheel is flexibly coupled to the Alternator rotor.

**7.2 ANTI-VIBRATION MOUNTING PADS**

Anti-Vibration pads are affixed between the Engine / Alternator feet and the Baseframe thus ensuring complete vibration isolation of the rotating assembly.

**7.3 SAFETY GUARDS**

The Fan & Fan Drive along with the Battery Charging Alternator are Safety Guard protected for personnel protection.

**8. FACTORY TEST**

- The Generating set is load tested before dispatch
- All protective devices control functions and site load conditions are simulated. The generator and it's systems are checked before dispatch.

**9. EQUIPMENT FINISHING**

All mild steel components are fully degreased and painted with powder coated paint to ensure maximum scuff resistance and durability.

**10. DOCUMENTATION**

Operation & Maintenance manual, Circuit wiring diagrams and Commissioning / Fault Finding instruction leaflets are accompanied with the Generator.

**11. QUALITY STANDARDS**

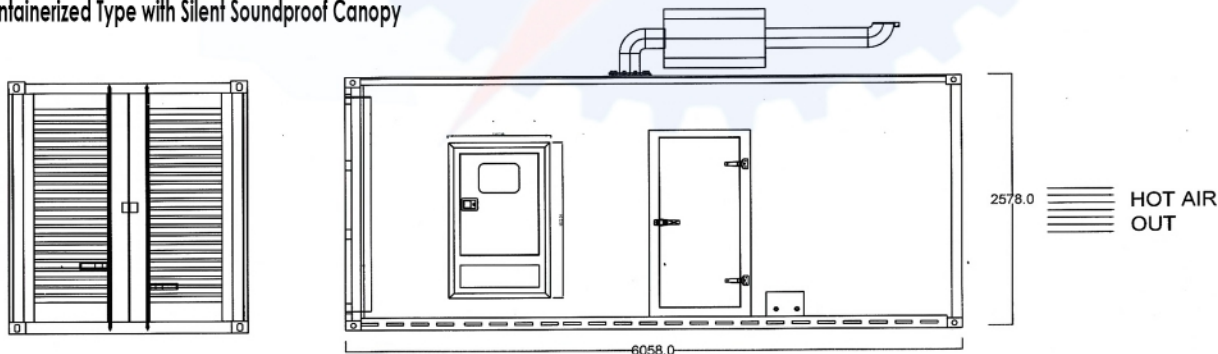
The equipment meets the following standards: BS4999, BS5000, BS5514 IEC 60034, VDE0530, NEMA MG 1.22 and ISO 8528.

**12. WARRANTY**

All of the Generating Sets are covered under a warranty policy for a period of 12 months or 1000 working hours. Warranty of the equipment is in line with manufacturers warranty terms & conditions.

(check warranty statement for more details, as it may vary for different countries)

In line with continuous product development, we reserve the right to change specifications without notice.

**STANDARD GENERATOR DIMENSION AND WEIGHT****Containerized Type with Silent Soundproof Canopy****Open Type (without Soundproof Canopy)**